



Apartment 16 23 Legge Lane, Birmingham, B1 3LX
£1,000 Per month



Table



Product: Double Bed
Quantity: 1/2/3



Product: Coffee Table
Quantity: 1



Product: Armchair
Quantity: 1



Chair



Product: 2/3 Seater Sofa
Quantity: 1



Product: Dining Table
Quantity: 1



Product: Media Unit
Quantity: 1

Apartment 16 23 Legge Lane, Birmingham, B1 3LX

£1,000 Per month

New to the market, this impressive and brand new one bedroom apartment is located in the popular Scholars Quarter development in the heart of the Jewellery Quarter, just a short walk from Birmingham city centre and numerous local amenities.

The property benefits from an entrance hallway with ample storage, leading into an open plan living room/dining area with wooden flooring, access to a private balcony and a stylish grey kitchen with integrated appliances. Also off the hallway is a large carpeted double bedroom and a luxury bathroom with bath and shower.

Brand new furniture pack to come, with video-entry phone access and neutral decoration throughout.

* Sorry, no allocated parking with this property. *

Description



Situation

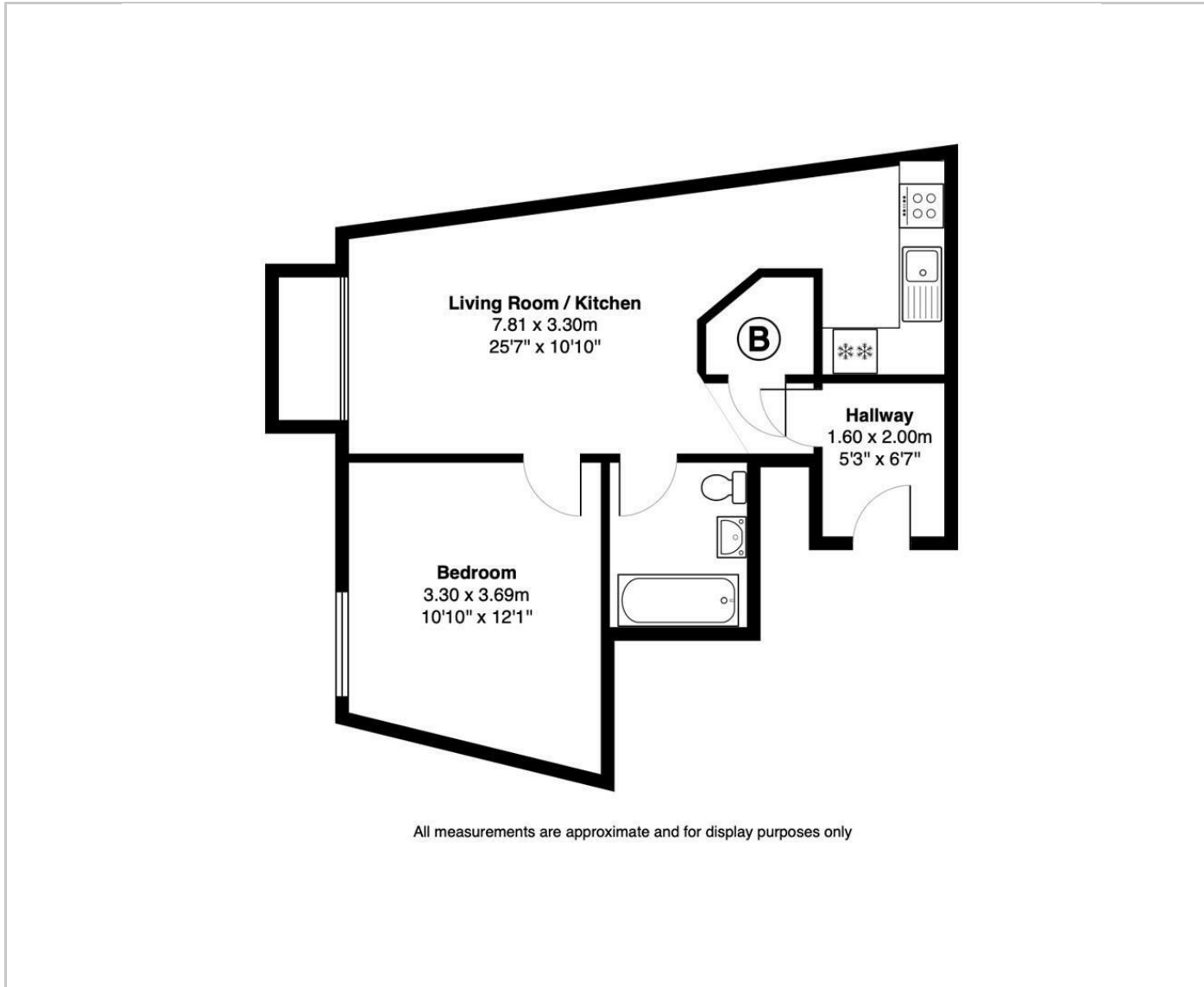


Furnished

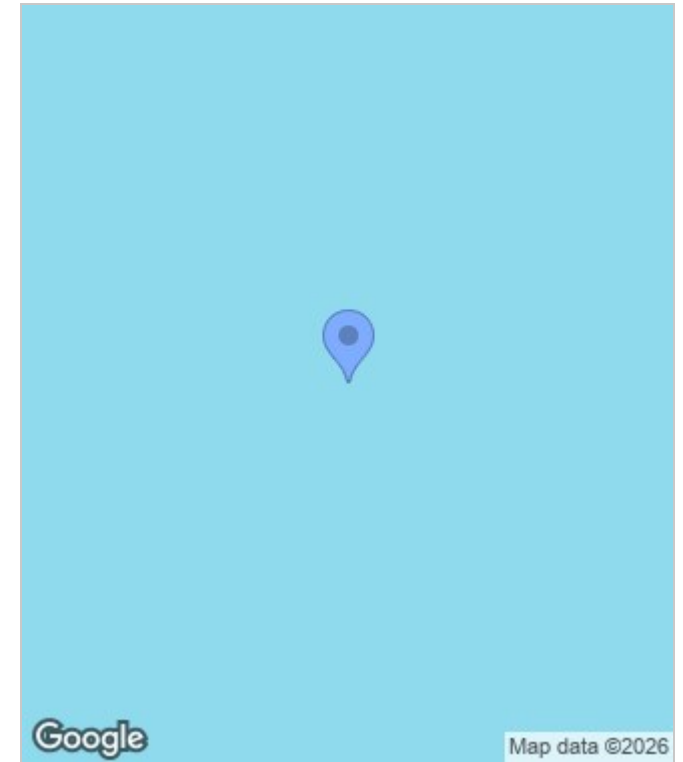
Council Tax Band: C

Available: 18th March 2026

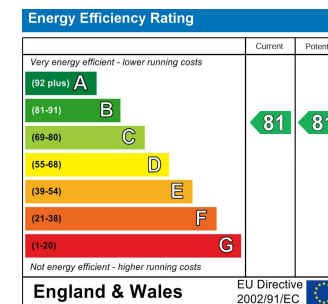
Floor Plans



Area Map



Energy Performance Graph



These particulars, whilst believed to be accurate are set out as a general outline only for guidance and do not constitute any part of an offer or contract. Intending purchasers should not rely on them as statements of representation of fact, but must satisfy themselves by inspection or otherwise as to their accuracy. No person in this firm's employment has the authority to make or give any representation or warranty in respect of the property.